







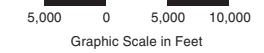
LEGEND

-  Study area
-  State/county boundary
-  Freeway
-  Secondary road
-  Residential road
-  Railroad

Source: Basemap—Skees Engineering, Inc.

Copyright © 1999, Louisville and Jefferson County Metropolitan Sewer District (MSD) and Louisville Water Company (LWC). All rights reserved.
 Louisville/Jefferson County Information Consortium (LOJIC), a Jefferson County Kentucky, based cooperative project of:
 City of Louisville
 Jefferson County
 Metropolitan Sewer District
 Property Valuation Administrator
 Louisville Water Company

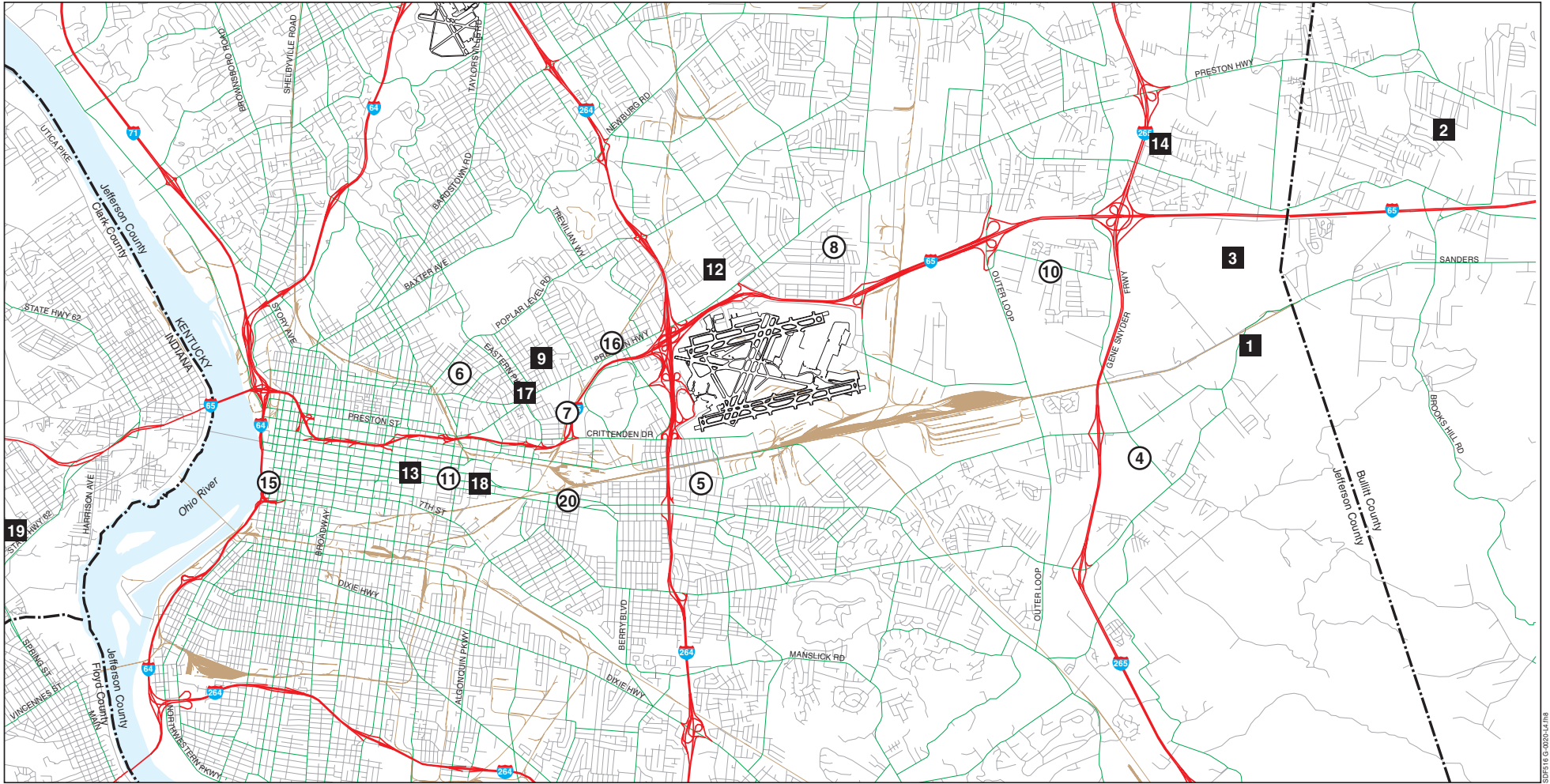
No part of this map may be reproduced or transmitted in any form or by any means, electronic or mechanical, including photocopying and recording, or by any information storage or retrieval system, except as expressly permitted in writing by MSD.



STUDY AREA
 FAR Part 150 Noise Compatibility Study
 Louisville International Airport
 July 1999



LEIGH FISHER ASSOCIATES



LEGEND

- 4 Noise monitoring site chosen by Noise Monitoring Committee
- 1 Noise monitoring site chosen by Consultant Team
- State/county boundary
- Freeway
- Secondary road
- Residential road
- Railroad

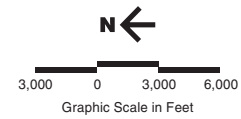
Source: Basemap—Skees Engineering, Inc.

Copyright © 1999 Louisville and Jefferson County Metropolitan Sewer District (MSD) and Louisville Water Company (LWC). All rights reserved.

Louisville/Jefferson County Information Consortium (LOJIC), a Jefferson County Kentucky, based cooperative project of:

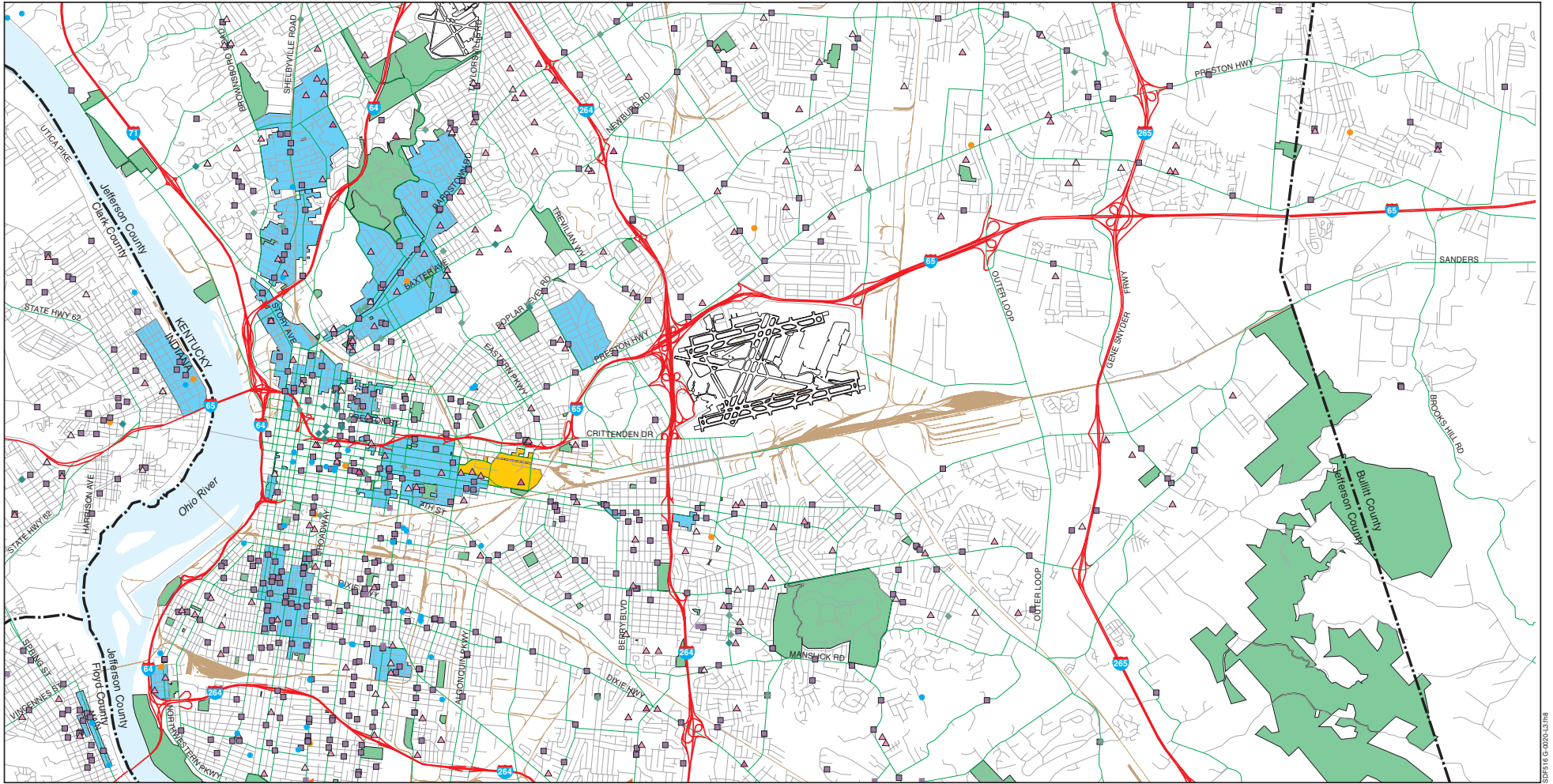
City of Louisville
 Jefferson County
 Metropolitan Sewer District
 Property Valuation Administrator
 Louisville Water Company

No part of this map may be reproduced or transmitted in any form or by any means, electronic or mechanical, including photocopying and recording, or by any information storage or retrieval system, except as expressly permitted in writing by MSD.



NOISE MONITORING SITES
 FAR Part 150 Noise Compatibility Study
 Louisville International Airport
 July 1999

SPE516 G 0203-14788



LEGEND

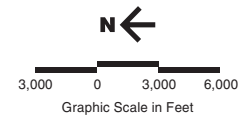
- △ △ Preschool/school/university
- ◆ Hospital/nursing homes
- Library
- Historic site
- Park
- Religious facility
- University of Louisville
- State/county boundary
- Freeway
- Secondary road
- Residential road
- Railroad

Sources: Basemap—Skees Engineering, Inc.
 Noise Sensitive Facilities—HNTB Corporation, Inc.,
 July 1999.

Copyright © 1999 Louisville and Jefferson County Metropolitan Sewer District (MSD) and Louisville Water Company (LWC). All rights reserved.
 Louisville/Jefferson County Information Consortium (LOJIC), a Jefferson County Kentucky, based cooperative project of:

City of Louisville
 Jefferson County
 Metropolitan Sewer District
 Property Valuation Administrator
 Louisville Water Company

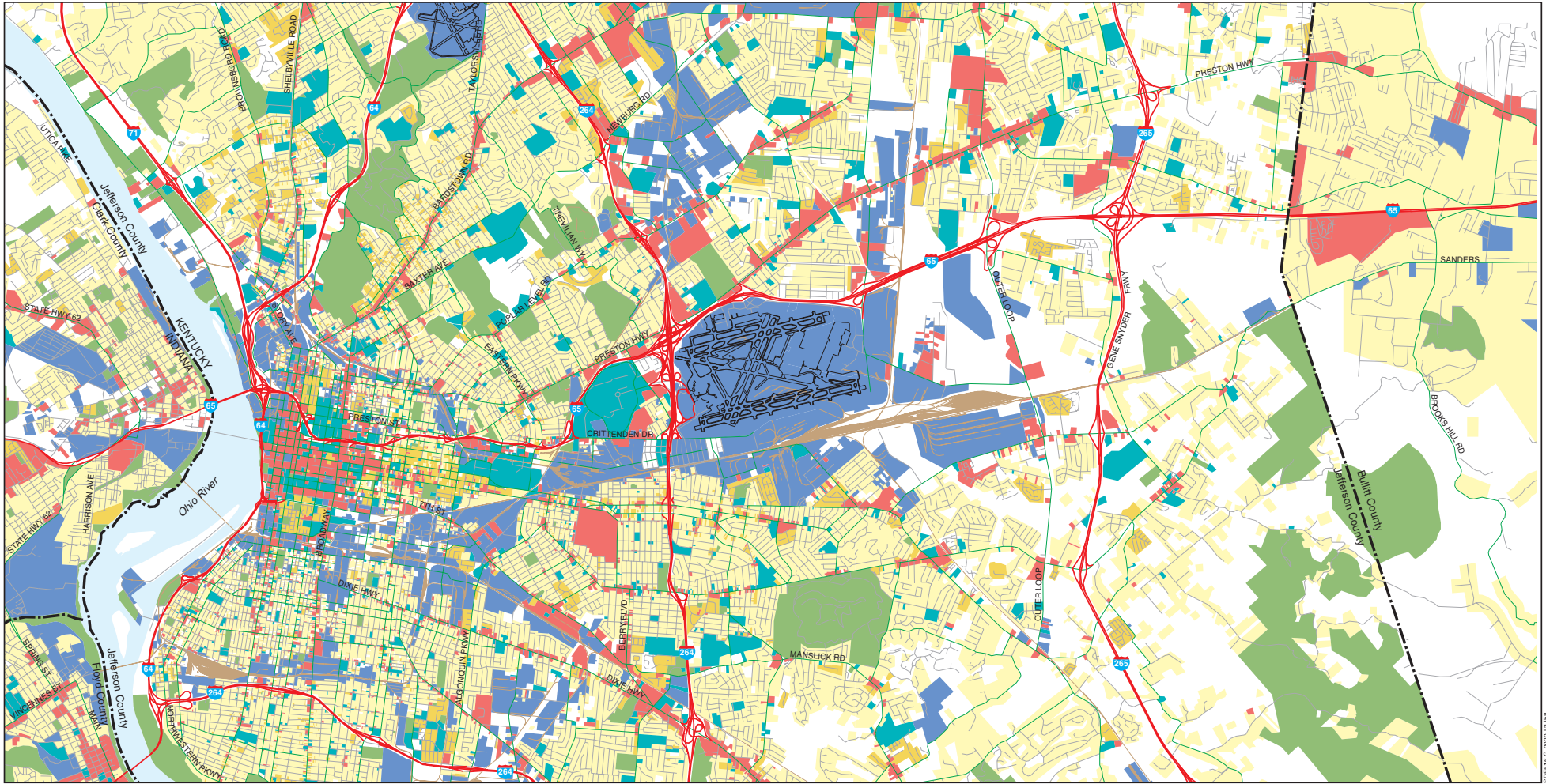
No part of this map may be reproduced or transmitted in any form or by any means, electronic or mechanical, including photocopying and recording, or by any information storage or retrieval system, except as expressly permitted in writing by MSD.



NOISE SENSITIVE FACILITIES
 FAR Part 150 Noise Compatibility Study
 Louisville International Airport
 July 1999



SUS16 © 2003-03-198

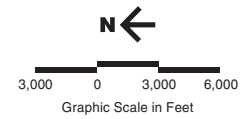


- LEGEND**
- Single family residential
 - Multi-family residential
 - Commercial
 - Industrial
 - Public and semi-public
 - Parks and open space
 - State/county boundary
 - Freeway
 - Secondary road
 - Residential road
 - Railroad

Sources: Basemap—Skees Engineering, Inc.
 Land Uses—Compiled and updated by HNTB Corporation, Inc. based on the following: LOJIC database, 1992 (updated); City of Louisville Urban Renewal Program; Bullitt County Comprehensive Plan Update, Final Report, 1997; City of Clarksville, Zoning District Classification Maps contained in Comprehensive Plan; City of Albany GIS Database, 1998; Jeffersonville Planning and Zoning Department, Existing Land Use Map, 1992.

Copyright © 1999, Louisville and Jefferson County Metropolitan Sewer District (MSD) and Louisville Water Company (LWC). All rights reserved.
 Louisville/Jefferson County Information Consortium (LOJIC), a Jefferson County Kentucky, based cooperative project of:
 City of Louisville
 Jefferson County
 Metropolitan Sewer District
 Property Valuation Administrator
 Louisville Water Company

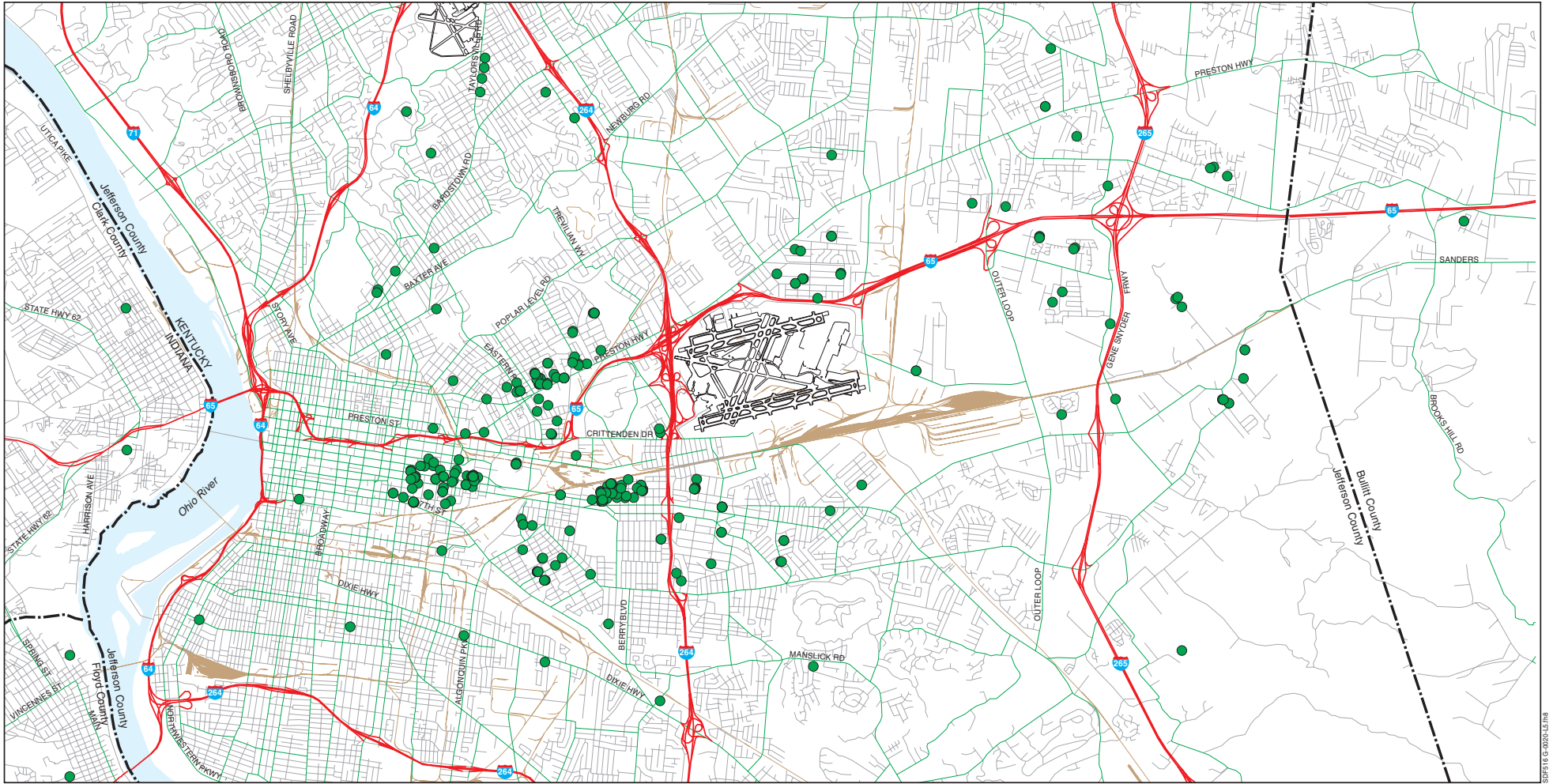
No part of this map may be reproduced or transmitted in any form or by any means, electronic or mechanical, including photocopying and recording, or by any information storage or retrieval system, except as expressly permitted in writing by MSD.



EXISTING LAND USE
 FAR Part 150 Noise Compatibility Study
 Louisville International Airport
 July 1999



SUF516 G 0203-02798



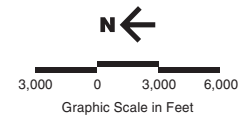
LEGEND

- Location of noise complaint
- State/county boundary
- Freeway
- Secondary road
- Residential road
- Railroad

Sources: Basemap—Skees Engineering, Inc.
 Historic noise complaints provided by Regional Airport Authority of Louisville and Jefferson County, July 1999.

Copyright © 1999 Louisville and Jefferson County Metropolitan Sewer District (MSD) and Louisville Water Company (LWC). All rights reserved.
 Louisville/Jefferson County Information Consortium (LOJIC), a Jefferson County Kentucky, based cooperative project of:
 City of Louisville
 Jefferson County
 Metropolitan Sewer District
 Property Valuation Administrator
 Louisville Water Company

No part of this map may be reproduced or transmitted in any form or by any means, electronic or mechanical, including photocopying and recording, or by any information storage or retrieval system, except as expressly permitted in writing by MSD.

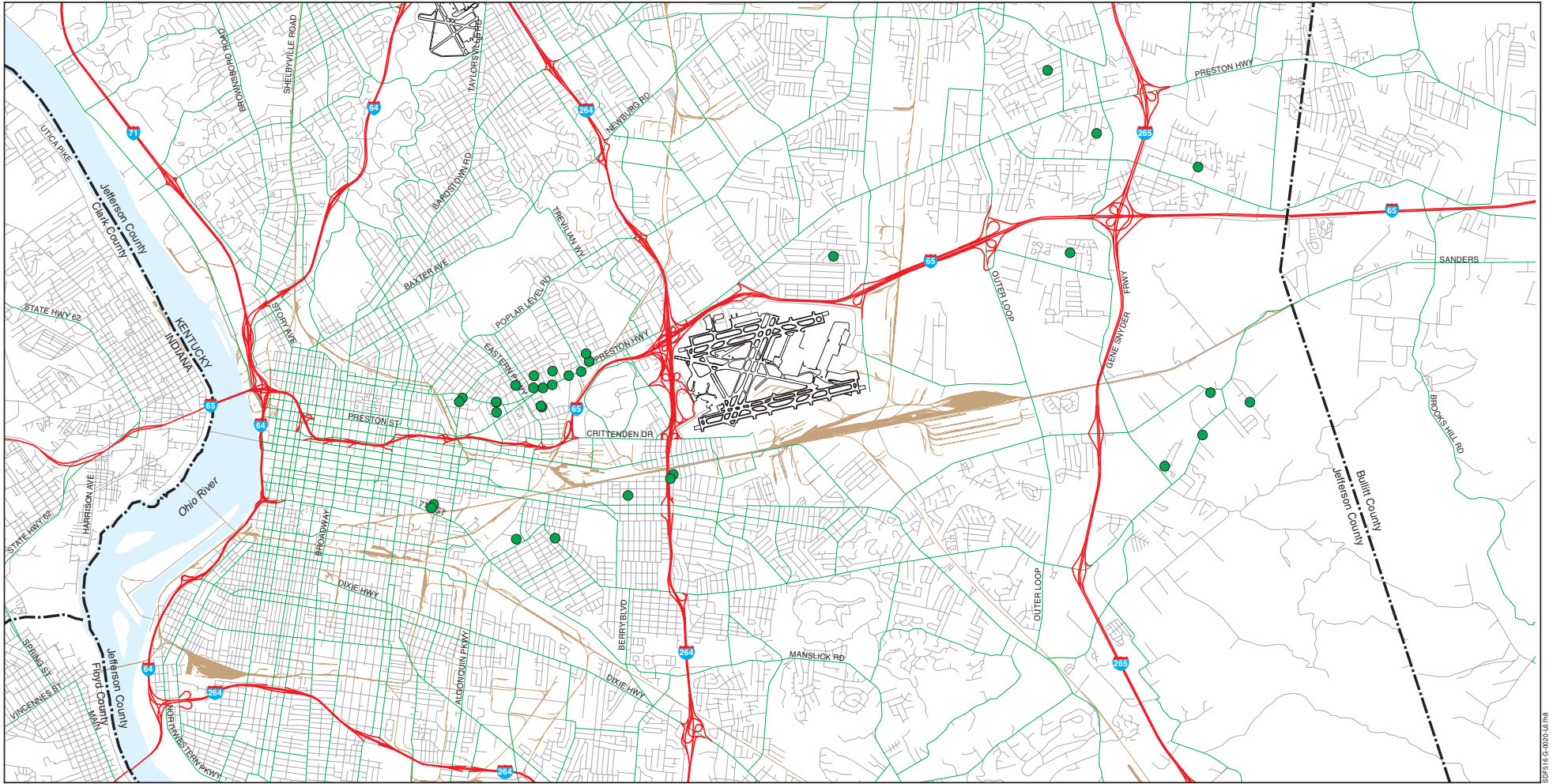


**HISTORICAL NOISE COMPLAINTS
 (OPENING OF WEST RUNWAY TO STUDY INITIATION)**

FAR Part 150 Noise Compatibility Study
 Louisville International Airport
 July 1999



SUS16 G 0203-LS198



LEGEND
 ● Location of noise complaint

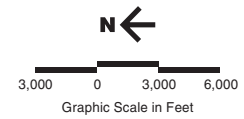
- State/county boundary
- Freeway
- Secondary road
- Residential road
- Railroad

Sources: Basemap—Skees Engineering, Inc.
 Current noise complaints compiled by Mo' Better Marketing Communications, based on data provided on the Project Website, Project Information Line, and at the Project Information Centers, July 1999.

Copyright © 1999 Louisville and Jefferson County Metropolitan Sewer District (MSD) and Louisville Water Company (LWC). All rights reserved.

Louisville/Jefferson County Information Consortium (LOJIC), a Jefferson County Kentucky, based cooperative project of:
 City of Louisville
 Jefferson County
 Metropolitan Sewer District
 Property Valuation Administrator
 Louisville Water Company

No part of this map may be reproduced or transmitted in any form or by any means, electronic or mechanical, including photocopying and recording, or by any information storage or retrieval system, except as expressly permitted in writing by MSD.



CURRENT NOISE COMPLAINTS
 (APRIL 16 THROUGH JULY 14, 1999)
 FAR Part 150 Noise Compatibility Study
 Louisville International Airport
 July 1999



SUSP16 G 0203-05.FMG