

LEGEND

- Single family residential land use
- Multi-family residential land use
- Preschool/school/university
- Hospital/nursing homes
- Library
- Historic site
- Historic district
- Park
- Religious facility
- University of Louisville

- 65 DNL Base case noise contour
- 65 DNL Alternative noise contour
- DNL = Day-night average sound level
- State/county boundary

Note: Blue shaded areas within historic district are developed as non-residential, non-recreational land use.

Sources: Base Map—Skees Engineering, Inc.
Land Uses and Noise Sensitive Facilities—Compiled and updated by HNTB Corporation, July 1999.
Noise Contours—Leigh Fisher Associates, October 2000.

Copyright © 1999, Louisville and Jefferson County Metropolitan Sewer District (MSD) and Louisville Water Company (LWC). All rights reserved.

Louisville/Jefferson County Information Consortium (LOJIC), a Jefferson County Kentucky, based cooperative project of:
City of Louisville
Jefferson County
Metropolitan Sewer District
Property Valuation Administrator
Louisville Water Company

No part of this map may be reproduced or transmitted in any form or by any means, electronic or mechanical, including photocopying and recording, or by any information storage or retrieval system, except as expressly permitted in writing by MSD.



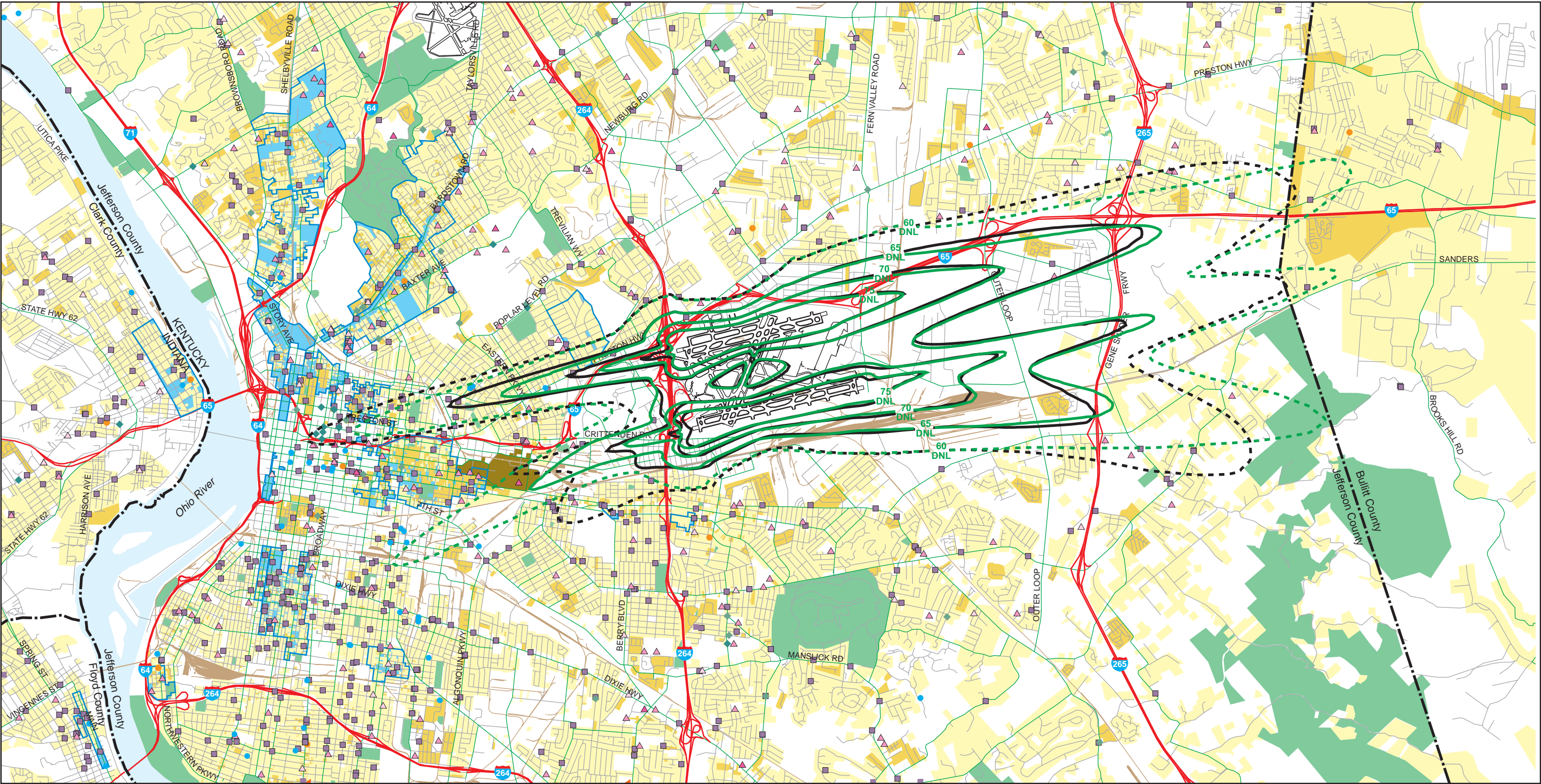
3,000 0 3,000 6,000

Graphic Scale in Feet

ALTERNATIVE 1 NOISE EXPOSURE
FAR Part 150 Noise Compatibility Study
Louisville International Airport
July 2001



SDF562 G-0001-L1.118



LEGEND

- Single family residential land use
- Multi-family residential land use
- Preschool/school/university
- Hospital/nursing homes
- Library
- Historic site
- Historic district
- Park
- Religious facility
- University of Louisville

- 65 DNL Base case noise contour
- 65 DNL Alternative noise contour
- DNL = Day-night average sound level
- State/county boundary

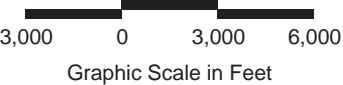
Note: Blue shaded areas within historic district are developed as non-residential, non-recreational land use.

Sources: Base Map—Skees Engineering, Inc.
Land Uses and Noise Sensitive Facilities—Compiled and updated by HNTB Corporation, July 1999.
Noise Contours—Leigh Fisher Associates, October 2000.

Copyright © 1999, Louisville and Jefferson County Metropolitan Sewer District (MSD) and Louisville Water Company (LWC). All rights reserved.

Louisville/Jefferson County Information Consortium (LOJIC), a Jefferson County Kentucky, based cooperative project of:
City of Louisville
Jefferson County
Metropolitan Sewer District
Property Valuation Administrator
Louisville Water Company

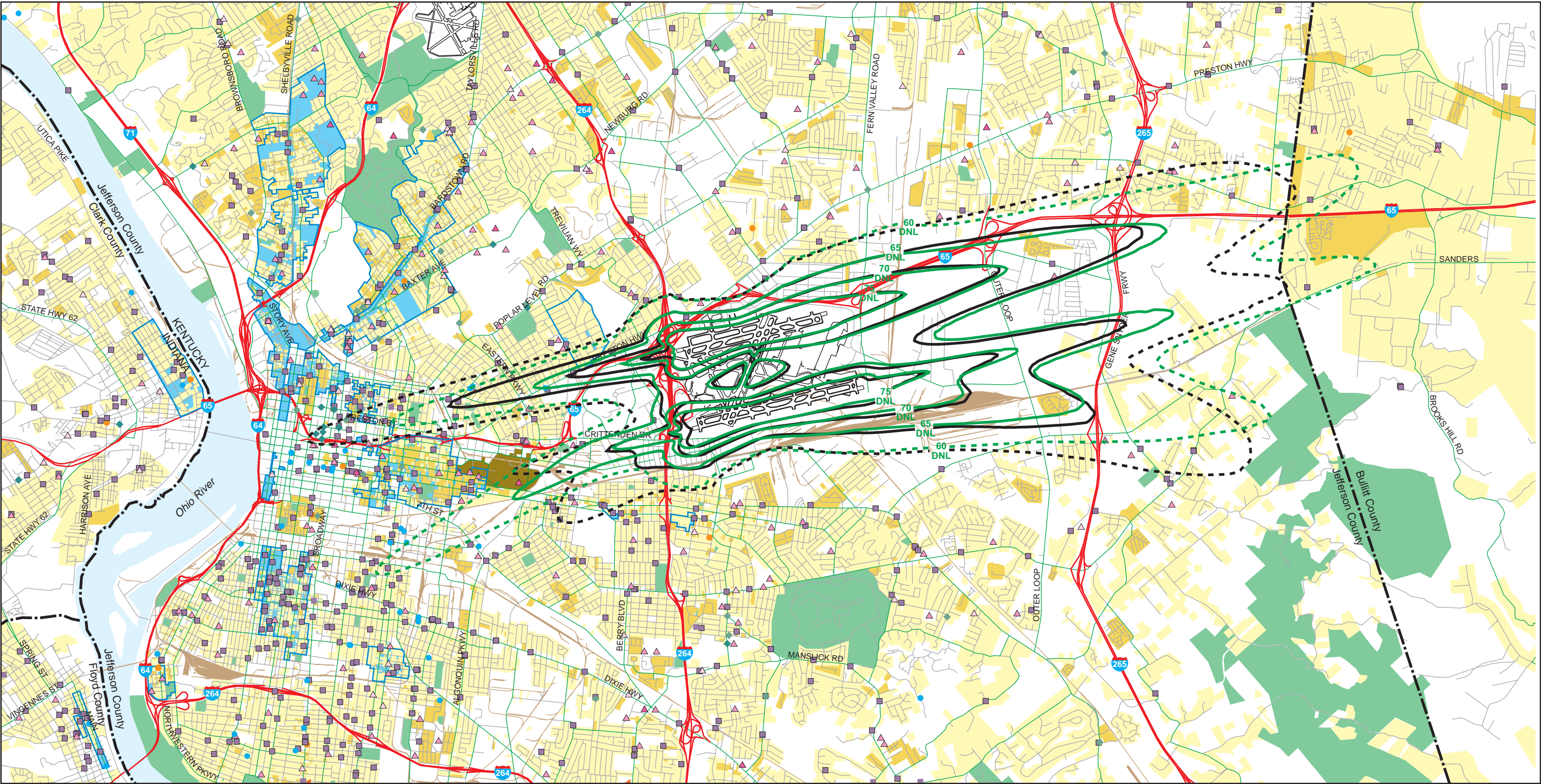
No part of this map may be reproduced or transmitted in any form or by any means, electronic or mechanical, including photocopying and recording, or by any information storage or retrieval system, except as expressly permitted in writing by MSD.



ALTERNATIVE 2 NOISE EXPOSURE
FAR Part 150 Noise Compatibility Study
Louisville International Airport
July 2001



SDF562 G-0001-L2.118



LEGEND

- Single family residential land use
- Multi-family residential land use
- Preschool/school/university
- Hospital/nursing homes
- Library
- Historic site
- Historic district
- Park
- Religious facility
- University of Louisville

- 65 DNL Base case noise contour
- 65 DNL Alternative noise contour
- DNL = Day-night average sound level
- State/county boundary

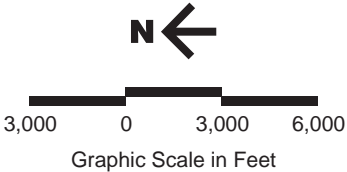
Note: Blue shaded areas within historic district are developed as non-residential, non-recreational land use.

Sources: Base Map—Skees Engineering, Inc.
Land Uses and Noise Sensitive Facilities—Compiled and updated by HNTB Corporation, July 1999.
Noise Contours—Leigh Fisher Associates, October 2000.

Copyright © 1999, Louisville and Jefferson County Metropolitan Sewer District (MSD) and Louisville Water Company (LWC). All rights reserved.

Louisville/Jefferson County Information Consortium (LOJIC), a Jefferson County Kentucky, based cooperative project of:
City of Louisville
Jefferson County
Metropolitan Sewer District
Property Valuation Administrator
Louisville Water Company

No part of this map may be reproduced or transmitted in any form or by any means, electronic or mechanical, including photocopying and recording, or by any information storage or retrieval system, except as expressly permitted in writing by MSD.



ALTERNATIVE 3 NOISE EXPOSURE
FAR Part 150 Noise Compatibility Study
Louisville International Airport
July 2001



SDF562 G-0001-L3.118